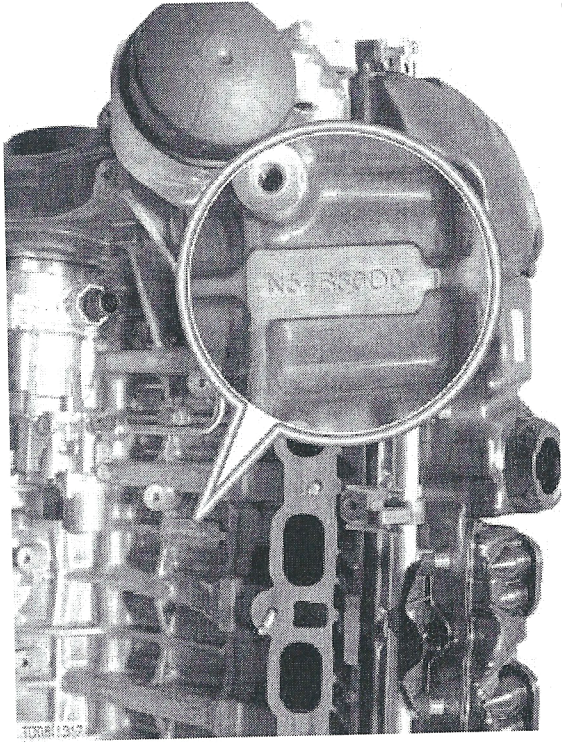
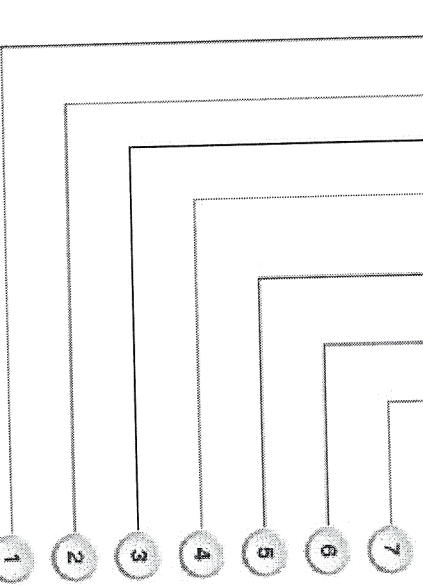


Case Identification
 Engine identification numbers are stamped on the block near
 high pressure pump.



N 5 2 B 30 A B



| Index | Designation | Code | Description |
|-------|----------------------------|------|---|
| 1 | Engine Generation | M | BMW Engines up to 2001 |
| | | N | BMW Engines from 2001 (New Generation) |
| | | S | BMW M GmbH |
| | | W | External Engines (i.e. Tritec MINI) |
| 2 | Engine Type | 4 | 4-cylinder in-line engine |
| | | 5 | 6-cylinder in-line engine |
| | | 6 | 8-cylinder "V" engine |
| | | 7 | 12-cylinder "V" engine |
| | | 8 | 10-cylinder "V" engine |
| 3 | Engine System | 0 | Basic engine |
| | | 1 | SULEV or PZEV |
| | | 2 | Valvetronic |
| | | 3 | Gasoline direct injection |
| | | 4 | Gasoline direct injection with turbocharger |
| | | 5 | Double VANOS with Valvetronic |
| | | 7 | Diesel direct injection with turbocharger |
| 4 | Fuel type/ operating mode | B | Gasoline |
| | | D | Diesel |
| | | E | Electric |
| | | G | Gas (natural) |
| | | H | Hydrogen |
| 5 | Displacement in 1/10 liter | 30 | 3.0 liter (example) |
| 6 | Fuel Grade | | |
| | | | |
| | | | |
| | | | |
| | | | |
| 7 | Performance Class | | |