

Registering a new battery in newer Bimmers where INPA does not list a Power module under the Body menu

Notes: There are two steps to registering a new battery:

1. Make sure the car is coded for the correct Amps/Hours rating of your new battery and type.
2. Register the new battery with the ECU. For the first step you will need to know the Amps/Hours (AH) rating of your new battery. If you don't know the AH rating, you can calculate it based off of the Reserve Capacity rating, which is generally easier to come by. Instructions to calculate below:

Calculating AH rating based off of the Reserve Capacity rating:

$$\text{Amp/Hours} = (\text{Reserve Capacity} / 2) + 16$$
 (i.e: If your battery had a Reserve Capacity of 100, you would get 66 AH rating)

Choose the AH ratings option closest to your battery for this CAS (Available settings are outlined below)

The first six are Wet Cell standard style of batteries and the others are the newer AGM style of battery.

The settings available are as such:

KLASSE_BATTERIE:

46ah

55ah

70ah

80ah

90ah

110ah

40ah_agm

60ah_agm

70ah_agm

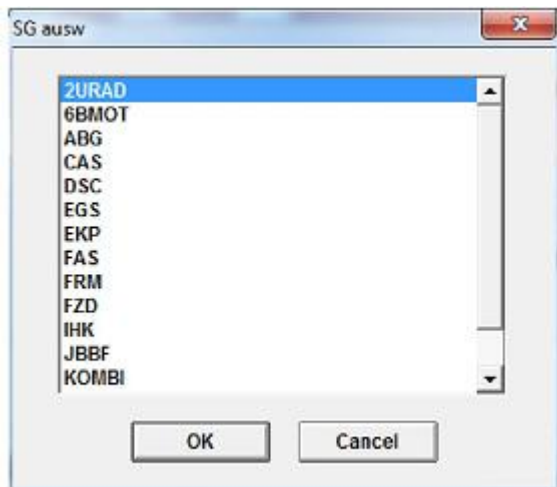
80ah_agm

90ah_agm

If you are replacing your battery with the same type and rated battery that your car is coded for, you can skip the **Coding the Battery Ah Setting in the CAS module** section and skip down to the **Registering the New Battery** section.

Coding the Battery Ah Setting in the CAS Module

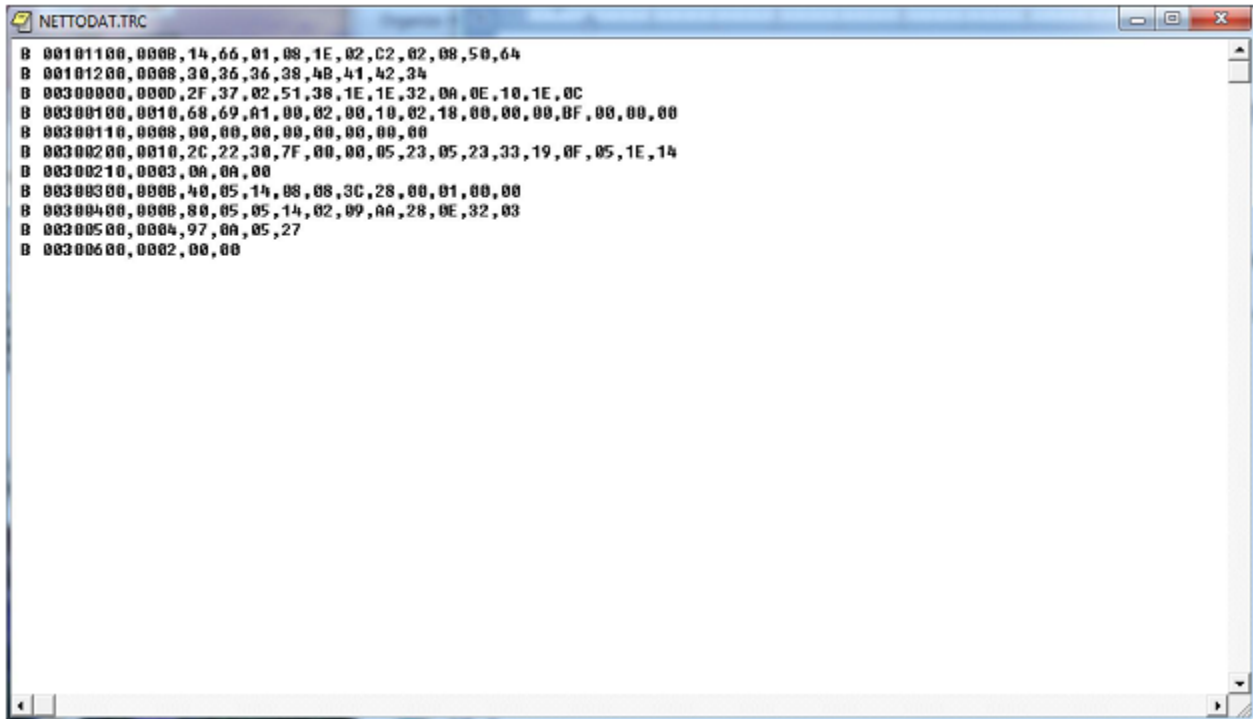
1. Just to avoid any mistake close NCS we are going to start from the beginning.
2. Load **NCS >File>load profile> "FSW PSW MAN"**
3. **F1>F3>**select your chassis>select **"CAS"**
4. Press **F6** for back
5. Press **F4** to select a specific module **"Process ecu"** then you get a list of all modules on your car
will and may be different.



- 6.
7. Select **"CAS"** then select **"READ ECU"** this is going to create another FSW_PSW.TRC file but only with the values on for the module we select.
8. Select **"READ ECU"** this will read all the values from the specific module and place them in the file

stated above. You will get a screen like this.. you can close it.

9.



10. Leave ncs open and head to the “**work**” folder.

11. Open the FSW_PSW.TRC file with notepad

12. File>save as **FSW_PSW.MAN** (be sure to select “save as type” to all files so that it will accept our “.MAN” extension. If you fail to do so it will just save it as a text file .TXT

13. The “FSW PSW MAN” profile that we used is going to use this “FSW_PSW.MAN” file . this is where we are going to make any changes and then NCS will write this to ECU.

14. Open the file we just saved with notepad will look like this.



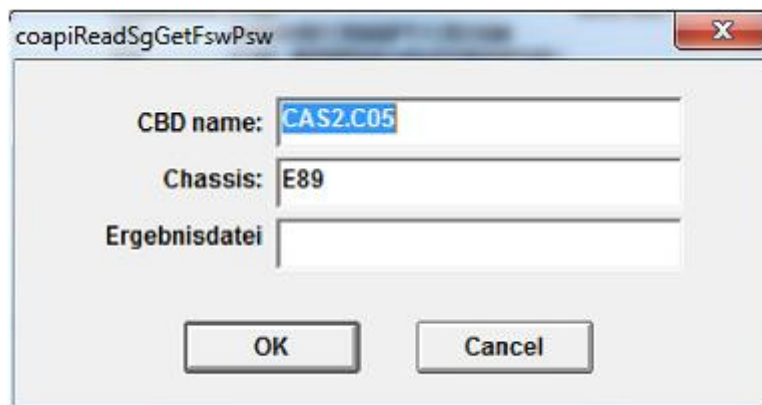
15.

16. Search for the option “**KLASSE_BATTERIE**” and change the value from it current setting closest match the rating of your battery (ie: “90ah” to “70ah”)

17. **File > Save**

18. Back to NCS now hit **F5** for basic functions

19. Select “**coapiReadSgGetFswPsw**” and **ok..** you are basically telling NCS to read all the values from your **fsw_psw.man** file. You will see a screen similar to this just press ok.



20.

21. Then you should get this.



22.

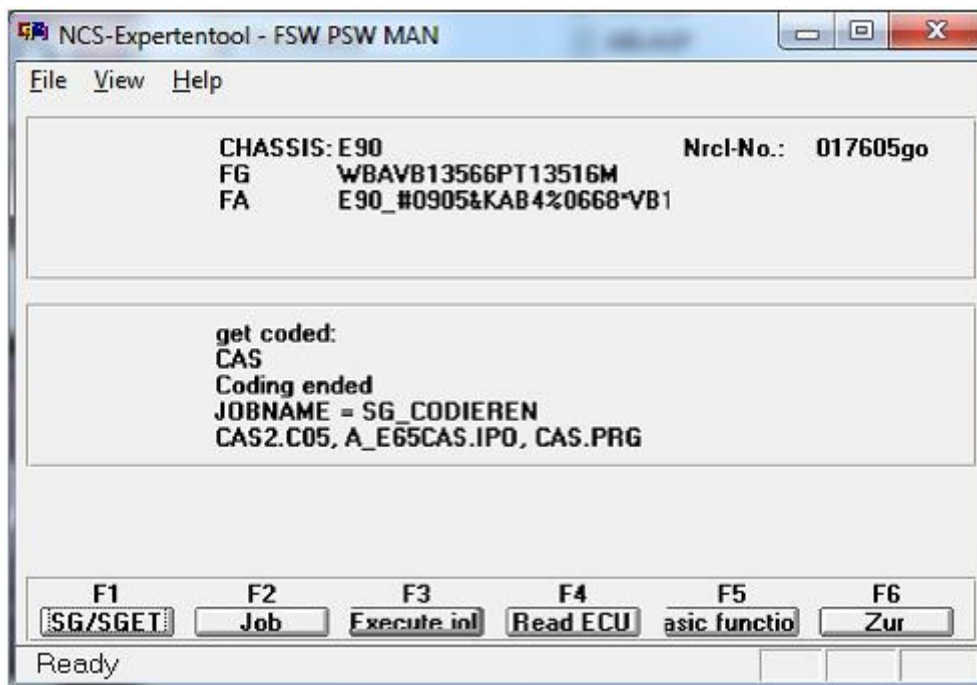
23. Press **ok**.

24. Ok now take a look where it says "**JOBNAME = CODIERDATEN_LESEN**"

25. We need to change that to a coding function because we want to write the changes to the module.

26. Select **F2 "job"** select **SG_CODIEREN** and press **ok**

27. Then press **F3** to execute the job. Will gray out for some time.. now you will see this . notice the "**coding ended**" message



28.

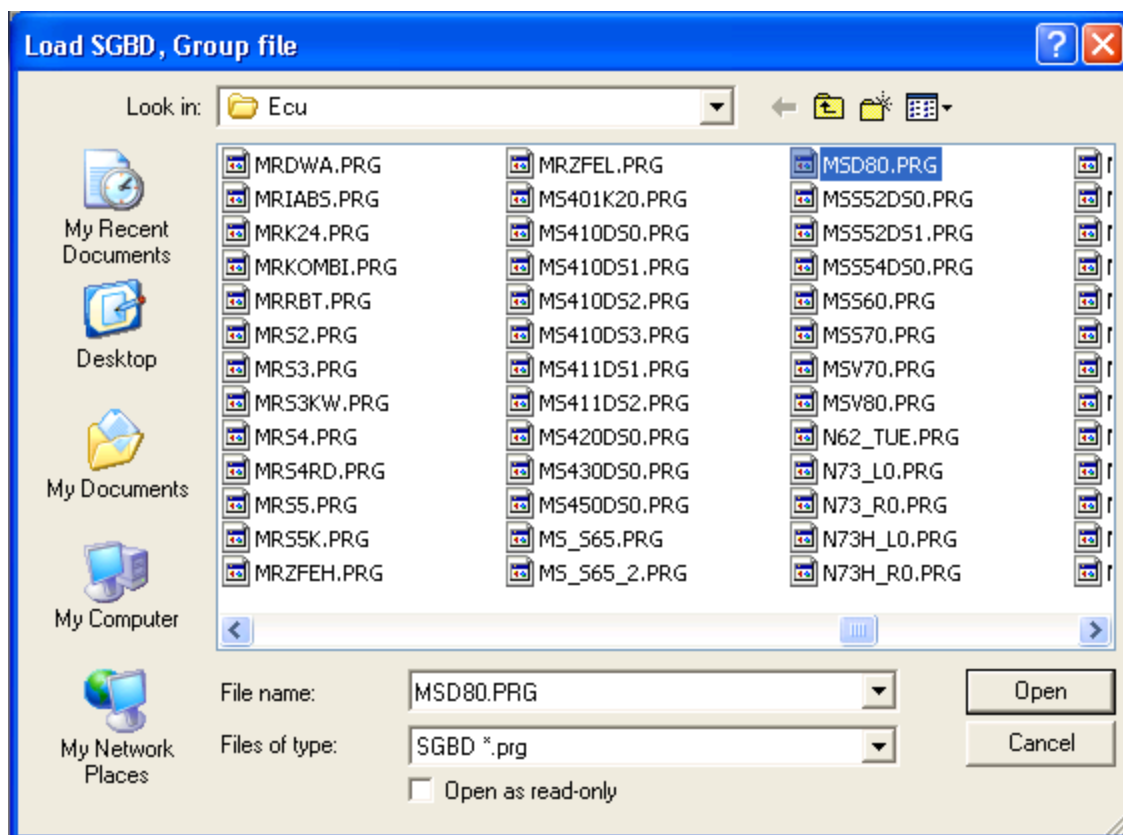
29. Assuming no errors.. The battery rating should now be updated in the system.

Registering the New Battery

Open up Toolset 32 (**TOOL32.EXE** under **C:\EDIABAS\bin** folder):

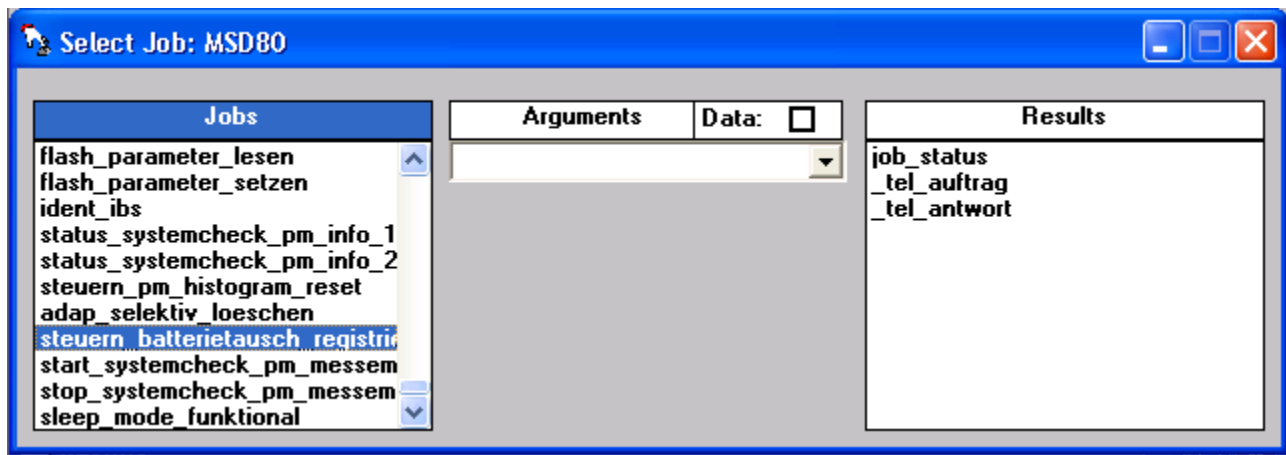
Note: For those of you that this is the first time using the EDIABAS Tool32 program, if when you open it the menu appears in German with a German flag in the title bar, click on **Konfiguration** in them menu bar, then click **ToolSet**, and then click the check box next to **Englische Version** in the popup window to get the English version.

1. Click **File**, then **Load SGBD, Group file** from the menu and open **MSD80.prg**

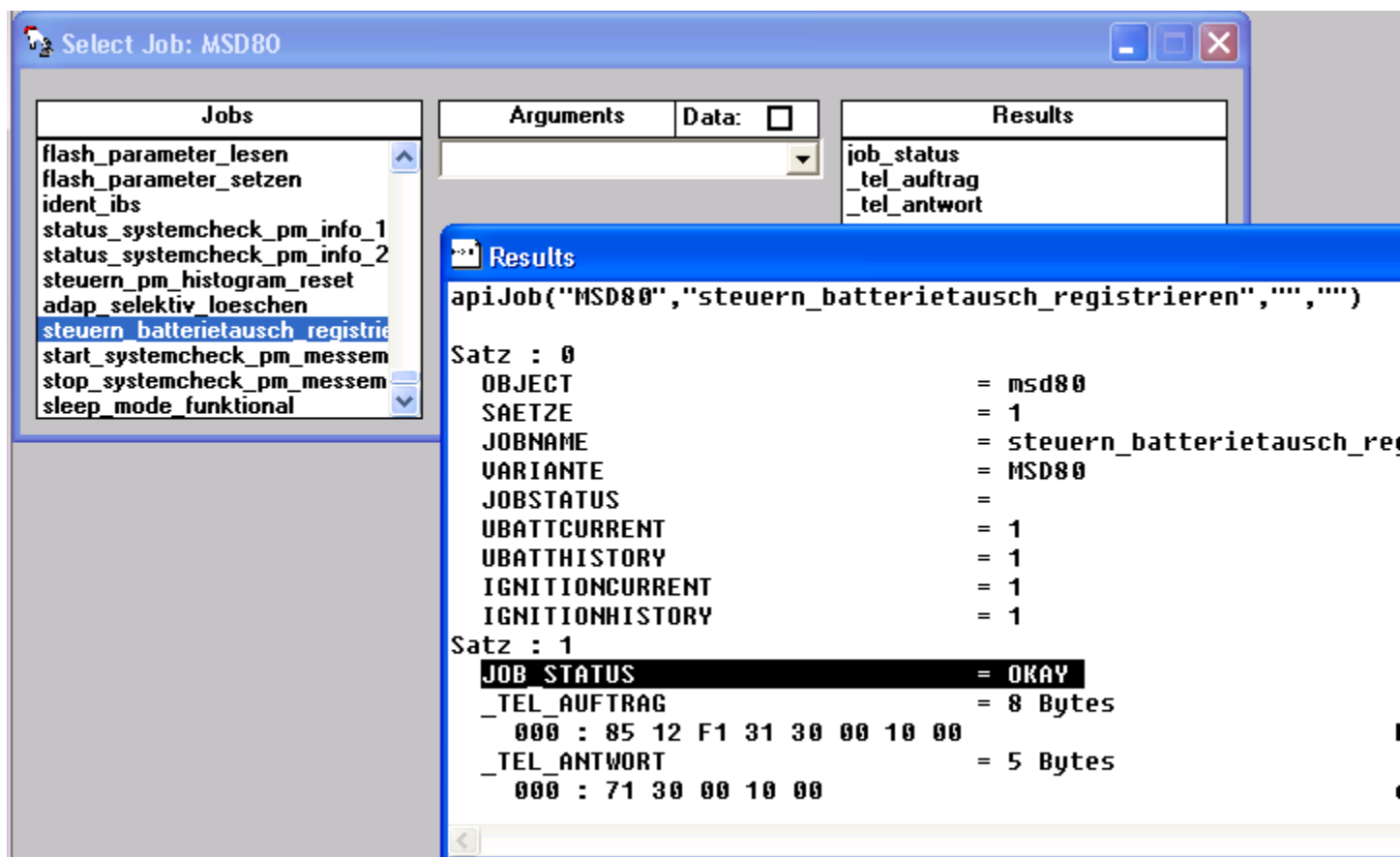


2. Look up **steuern_batterietausch_registri.** (near bottom of job list)

Note: It may alternatively be under **MSV70.prg** or **MSV80.prg** from the previous step.



3. Go to **Jobs** menu
4. Select **Start Job once only** from the **Job** menu.



5. This job runs very quickly, look in the Results window for the line **JOB_STATUS = OKAY** (I have highlighted mine above). If you see that line, congrats - your battery registration is complete!