

## ADVANCED SUSPENSION TECHNOLOGY

# AUTOMOTIVE ROAD & TRACK

## SAFETY PRECAUTIONS

### **Warning!**

*The shock absorber/front fork/steering damper is an important part of the vehicle and will affect the stability.*

### **Warning!**

*After installing the Öhlins product, take a test ride at low speed to make sure your vehicle has maintained stability.*

### **Warning!**

*Some of Öhlins products contain pressurized nitrogen gas (N<sub>2</sub>). Do not open, service or modify pressurized products without proper education (approved Öhlins dealer/distributor) and proper tools.*

### **Note!**

*Read and ensure you understand the information in this manual and other technical documents provided by Öhlins, before you use the product.*

### **Note!**

*Öhlins Racing AB can not be held responsible for any damage to the shock absorber/front fork/steering damper, vehicle, other property or injury to persons, if the instructions for mounting, usage and maintenance are not obeyed.*

### **Warning!**

*If the suspension makes an abnormal noise, or the function is irregular, or if you notice any leakage from the product, stop the vehicle immediately and return the product to an Öhlins Service Centre.*

### **Warning!**

*The product warranty shall only apply if the product has been operated and maintained in accordance with recommendations in this manual. If you have any questions regarding usage, service, inspection and/or maintenance contact Öhlins.*

### **Note!**

*When working with the Öhlins product, read the Vehicle Service Manual.*

## SAFETY SYMBOLS

*In this manual, mounting instructions and other technical documents, important information concerning safety is distinguished by the following symbols:*



*The Safety Alert Symbol means: Warning! Your safety is involved.*

### **Warning!**

*The Warning Symbol means: Failure to follow warning instructions can result in severe or fatal injury to anyone working with, inspecting or using the shock absorber, or to bystanders.*

### **Caution!**

*The Caution Symbol means: Special precautions must be taken to avoid damage to the shock absorber.*

### **Note!**

*The Note Symbol indicates information that is important regarding procedures.*

### **Warning!**

*This product was developed and designed exclusively for a specific vehicle model and shall only be installed on the intended vehicle model in its original condition as delivered from the vehicle manufacturer.*

© Öhlins Racing AB. All rights reserved.

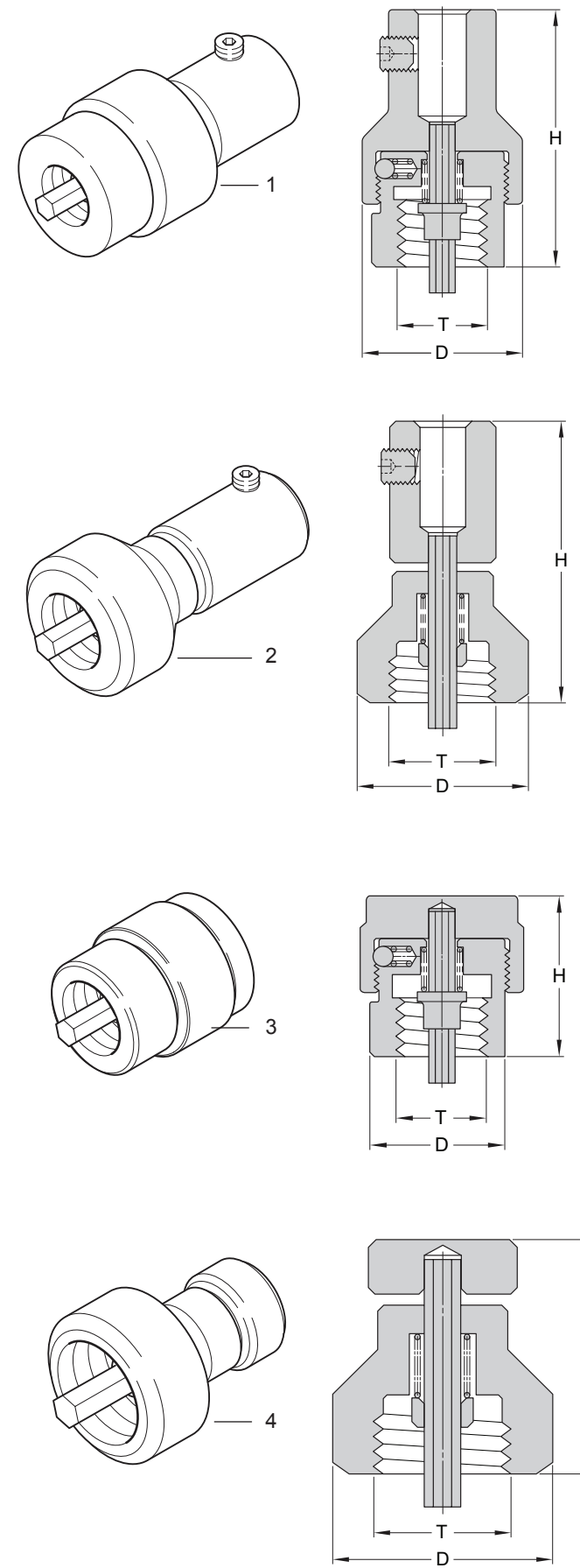
Any reprinting or unauthorized use without the written permission of Öhlins Racing AB is prohibited.

## Contents

1 - Rebound adjusters.....	3
2 - Bellows .....	4
3 - Bump stops.....	5
4 - Spring platform, adjustment nuts and spring seat .....	6
5 - Spacers .....	6
6 - Control wires, knob and screw .....	7
7 - Bushing.....	8
8 - Scraper .....	8
9 - Sleeve.....	8
10 - Bearing carrier .....	9
11 - Ball joint .....	9
12 - Circlip.....	9
13 - Top shaft jet .....	9
14 - Adjuster cup .....	10
15 - Hex nut .....	10
16 - End clevis .....	10
17 - End eye .....	10
18 - Rubber valve.....	11
19 - Grease R&T Automotive .....	11
Spare kit.....	12
Spring specification.....	12

# AUTOMOTIVE ROAD & TRACK

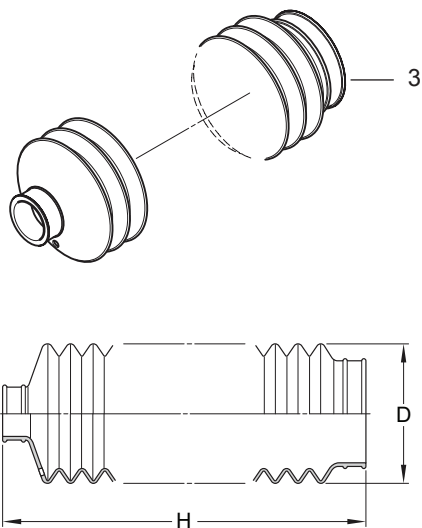
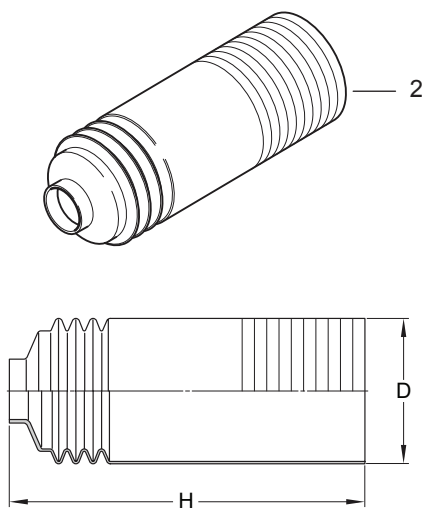
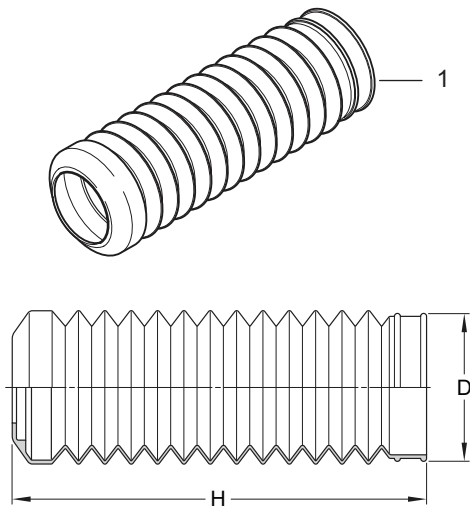
## 1 - Rebound adjusters



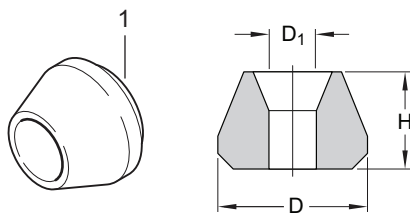
Pos	Part No	H	D	T
1-1	24631-03	29 mm	18 mm	M10 x 1.25
1-2	24631-01	35 mm	-	M12 x 1.25
1-3	24631-04	18 mm	18 mm	M10 x 1.25
1-4	24631-02	19 mm	-	M12 x 1.25

## 2 - Bellows

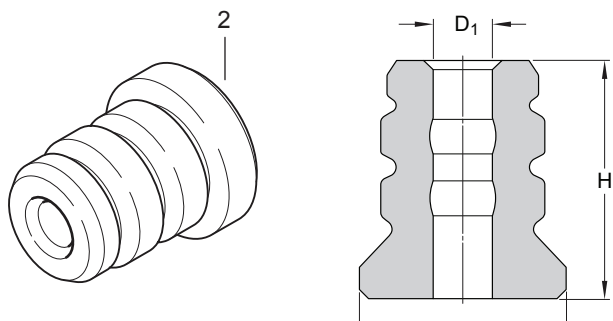
Pos	Part No	H	D
2-1	10216-01	157 mm	58 mm
2-2	10216-02	145 mm	59 mm
2-3	10216-03	240 mm	74 mm



## 3 - Bump stops

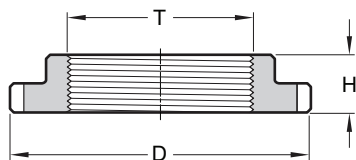
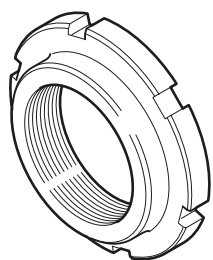


Pos	Part No	H	D	$D_1$
3-1	24630-01	31 mm	37 mm	13.5 mm
	24630-02	25 mm	38 mm	30 mm
3-2	24630-03	53.5 mm	46.5 mm	13.5 mm



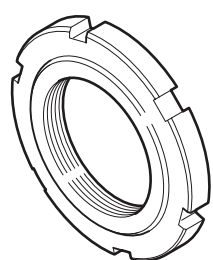
# AUTOMOTIVE ROAD & TRACK

## 4 - Spring platform, adjustment nuts and spring seat

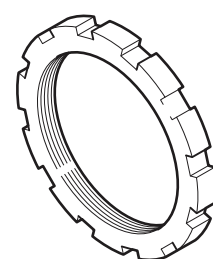


Pos	Part No	H	D	T
4-1	24635-03	16 mm	84 mm	M52 x 1.5
4-1	24635-02	16 mm	84 mm	M52 x 2.0
4-1	24635-01	16 mm	84 mm	M56 x 2.0
4-1	24635-04	16 mm	89 mm	M60 x 2.0

### Adjustment nut

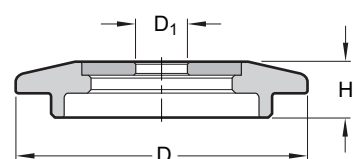
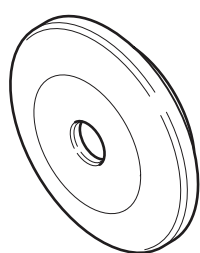


Pos	Part No	H	D	T
4-2	24636-02	9 mm	76 mm	M52 x 2.0
4-2	24636-01	9 mm	76 mm	M56 x 2.0
4-2	24636-04	9 mm	75 mm	M60 x 2.0



Pos	Part No	H	D	T
4-3	24636-03	6 mm	64 mm	M52 x 1.5

### Spring seat



Pos	Part No	H	D	D <sub>1</sub>
4-4	24637-01	16 mm	84 mm	15 mm
4-4	24637-02	16 mm	84 mm	14 mm

## 5 - Spacer, rubber



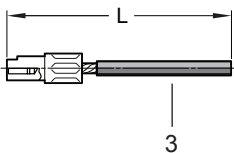
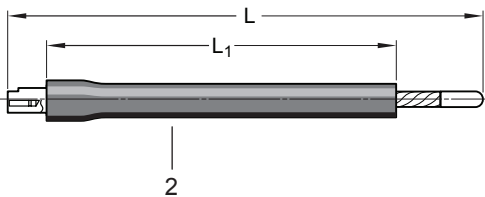
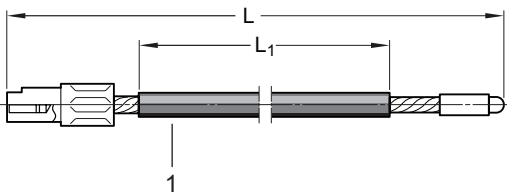
### Spacer, nylon



Pos	Part No
5-1	25601-01

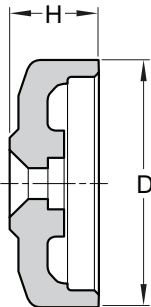
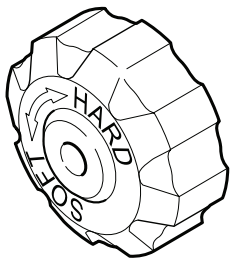
Pos	Part No
5-2	25602-01

## 6 - Control wires, knob and screw



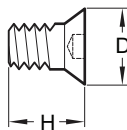
Pos	Part No	L	L <sub>1</sub>
6-1	24632-01	380 mm	330 mm
	24632-02	280 mm	230 mm
6-2	24632-03	136 mm	100 mm
6-3	24632-04	65 mm	-

## Control knob



Pos	Part No	H	D
6-4	24633-01	15 mm	31 mm

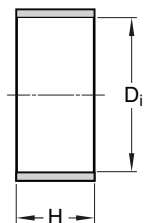
## Screw control knob



Pos	Part No	H	D
6-5	24633-02	11,5 mm	9 mm

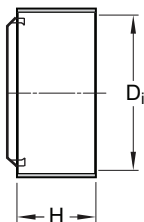
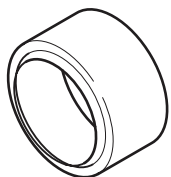
# AUTOMOTIVE ROAD & TRACK

## 7 - Bushing



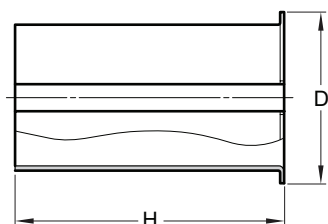
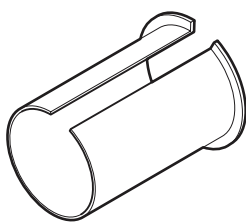
Pos	Part No	H	Di
7-1	05371-01	20 mm	40 mm
7-1	10212-02	20 mm	44 mm

## 8 - Scraper



Pos	Part No	H	Di
8-1	10211-01	20 mm	40 mm
8-1	10211-02	20 mm	44 mm

## 9 - Sleeve



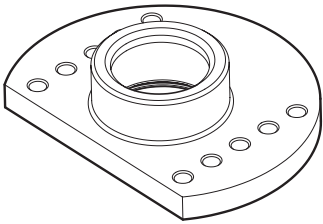
Pos	Part No	H	D
9-1	24638-01	101.6 mm	54.8 mm



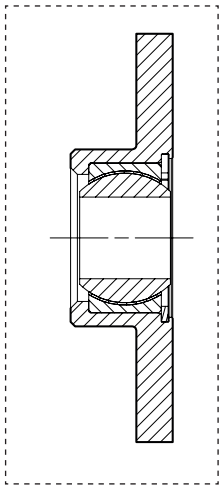
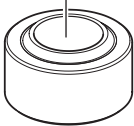
# AUTOMOTIVE ROAD & TRACK

## 10 - Bearing carrier

Pos	Part No
10-1	24620-01



## 11 - Ball joint



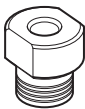
Pos	Part No	dim
11-1	05536-50	18/33/20 Fits 24620-01
11-2	05536-52	14/28/17
11-3	05536-51	16/30/19

## 12 - Circlip



Pos	Part No
12-1	01152-06

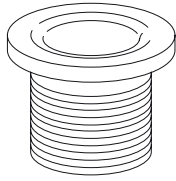
## 13 - Top shaft jet



Pos	Part No	
13-1	25624-01	2.5mm
13-2	25624-02	3.2mm
13-3	25624-03	4.0mm

# AUTOMOTIVE ROAD & TRACK

## 14 - Adjuster cup



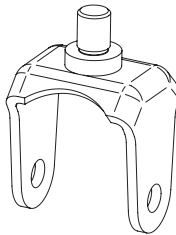
Pos	Part No	Height
14-1	25617-01	62 mm
	25617-02	90 mm
	Use together with	
	Spring platform	24635-03
	Adjustment nut	24636-03

## 15 - Hex nut



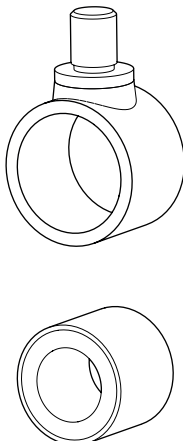
Pos	Part No		
15-1	25604-01	M14x1,5	Note! 6 mm high

## 16 - End clevis



Pos	Part No
16-1	25606-01

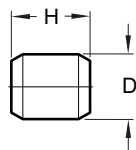
## 17 - End eye



Pos	Part No		
17-1	25607-01	End eye	
17-2	25608-01	Rubber bushing	16/37/40

# AUTOMOTIVE ROAD & TRACK

## 18 - Rubber valve



Pos	Part No	H	D
18-1	10213-01	6 mm	5 mm

## 19 - Grease R&T Automotive



Pos	Part No	
19-1	10231-81	2,5 kg

# AUTOMOTIVE ROAD & TRACK

## RTKIT 01 Spare parts kit 36 McPherson

Name	pcs
Piston ring 36 R&T Car	2
O-ring divider piston 36 R&T Car	2
O-ring adjustment needle R&T Car	2
Rubber valve R&T Car	2
O-ring DFV R&T Car	2
Seal head assy 12.5/36 R&T Car	2

## RTKIT 03 R&T spare parts kit 46

Name	pcs
Piston ring 46 R&T Car	2
O-ring divider piston 46 R&T Car	2
O-ring adjustment needle R&T Car	2
Rubber valve R&T Car	2
O-ring DFV R&T Car	2
Seal head assy 14/46 R&T Car	2

## RTKIT 02 Spare parts kit 40 McPherson

Name	pcs
Piston ring 40 R&T Car	2
O-ring divider piston 40 R&T Car	2
O-ring adjustment needle R&T Car	2
Rubber valve R&T Car	2
O-ring DFV R&T Car	2
Seal head assy 12.5/40 R&T Car	2

## Spring specification

Öhlins part no	Marking on spring	Design	Free Length	Free Length	Spring rate	Max. deflection
			(mm)	(mm)	N/mm	(mm)
47000-15	47000-15/60Cxxx	Straight id 65mm	180	180	60.0	112
47000-19	47000-19/70Cxxx	Straight id 65mm	180	180	70.0	-
47000-35	47000-35/110Cxxx	Straight id 65mm	180	180	110.0	96
47010-11	47010-11/50Cxxx	Straight id 65mm	200	200	50.0	124
47010-15	47010-15/60Cxxx	Straight id 65mm	200	200	60.0	121
47010-19	47010-19/70Cxxx	Straight id 65mm	200	200	70.0	117
47010-23	47010-23/80Cxxx	Straight id 65mm	200	200	80.0	113
47010-27	47010-27/90Cxxx	Straight id 65mm	200	200	90.0	107
47010-31	47010-31/100Cxxx	Straight id 65mm	200	200	100.0	107
47010-35	47010-35/110Cxxx	Straight id 65mm	200	200	110.0	108
47010-39	47010-39/120Cxxx	Straight id 65mm	200	200	120.0	101
47010-47	47010-47/140Cxxx	Straight id 65mm	200	200	140.0	100
47020-19	47020-19/70Cxxx	Straight id 65mm	250	250	70.0	143
47020-23	47020-23/80Cxxx	Straight id 65mm	250	250	80.0	138
47030-07	47030-07/40Cxxx	Tapered id 70-100mm	200	200	40.0	N/A
47030-11	47030-11/50Cxxx	Tapered id 70-100mm	200	200	50.0	N/A

Your Öhlins retailer:

Öhlins Racing AB  
Box 722  
SE-194 27, Upplands Väsby  
Sweden

Phone: +46 (0)8 590 025 00  
Fax: +46 (0)8 590 025 80  
[www.ohlins.com](http://www.ohlins.com)



[www.ohlins.com](http://www.ohlins.com)